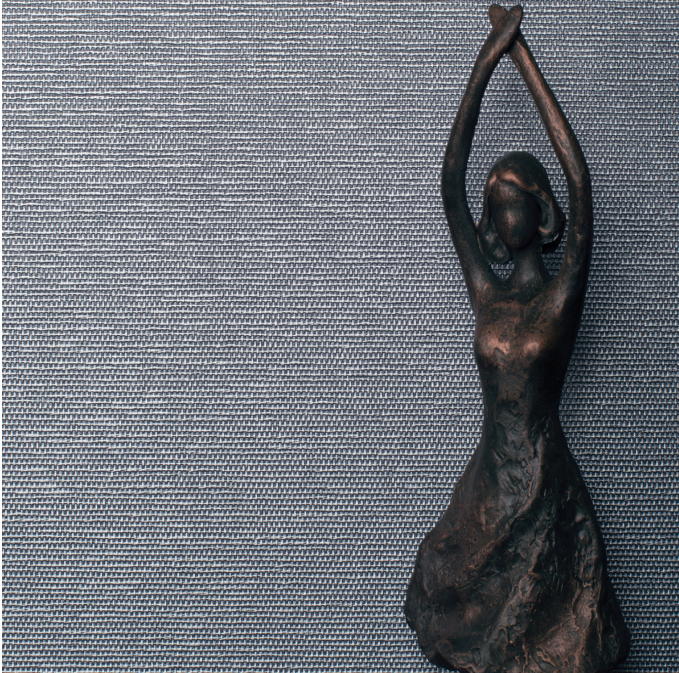


COMMAND[®]

WALLCOVERINGS



DUBAI

Physical Properties

Weight: Type II 20 oz
Content: 100% Vinyl
Backing: Osnaburg
Width: 52/54"
Repeat: Random Reversible

Performance:

Fire Rating: Class A, ASTM E84
Europe CE Fire Tested
Color Fastness UK Test Result: BS2782-Pass
Meets Federal Specifications CCC-W-408D for scrubbability, washability and stain resistant.

Sustainability:

Low emitting--passes Cal 01350 Standard (Leed EQ 4.2)
NSF 342

Product contains up to 40% recycled content
Free of conflict minerals, heavy metals, solvents, phthalates (BBP, DBP, DEHP, DIDP, DnHP, DnOP), PFC/PFOA
Printed with Solvent-Free Inks
This product has a CE Declaration of of Conformity.

Note:

All wall surfacing materials including wallcoverings, should be selected taking into account the building in which they are to be installed. Buildings that have had liquid or vapor moisture infiltration problems or that have other conditions that make moisture infiltration likely are at risk for mold growth. Should these factors become an issue consult with a professional about the benefits and limitations of wallcovering. All textural type patterns are designed to simulate natural materials. Color, texture and shading should be anticipated as these variations are part of the manufacturing process and add to the richness and beauty of the product.

Manufactured in the USA

Available in 17 Colorways

CM123-2464 Ingot	CM123-2473 Sterling
CM123-2465 Winter	CM123-2474 Titanium
CM123-2466 Buff	CM123-2475 Loch
CM123-2467 Creme	CM123-2476 Slate
CM123-2468 Linen	CM123-2477 Rose Gold
CM123-2469 Platinum	CM123-2478 Gilded
CM123-2470 Latte	CM123-2479 Ming
CM123-2471 Spa	CM123-2480 Clavet
CM123-2472 Bourbon	

